

Addendum to ColorQuest XE and LabScan XE User's Manual

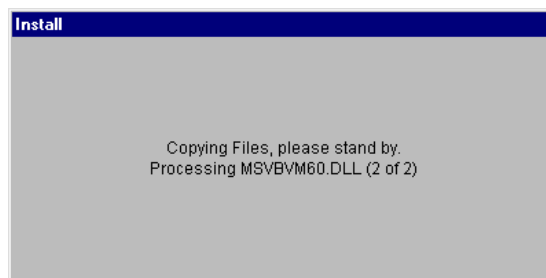
Description

CMR 2532 provides an ActiveX control for interfacing to ColorQuest XE and LabScan XE instruments. A separate HTML-based help file that describes the control interface is also provided, along with two code samples (one for Visual Basic Version 4.0 or higher and the other for Excel 95 or higher) that illustrate how to communicate with the instrument. The ActiveX control is designed for use with Windows XP, VISTA, and Windows 7.

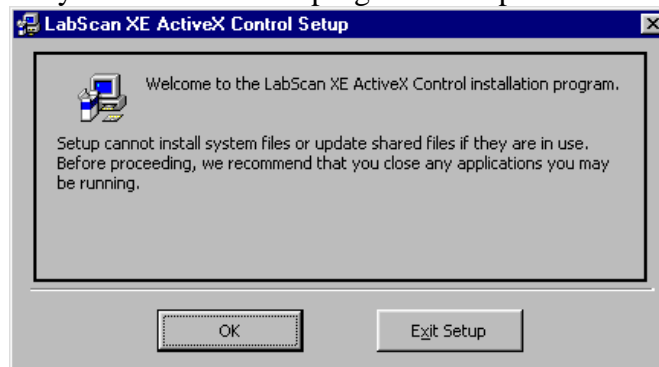
Installation

Installing the ActiveX Control

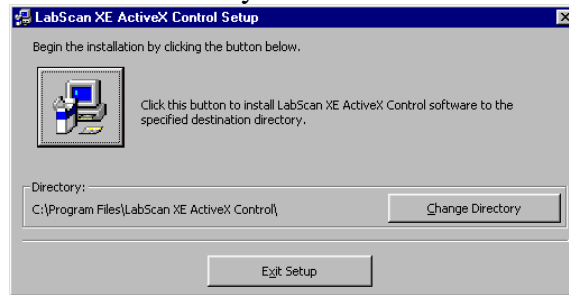
1. Close any open applications other than Windows.
2. Place the CMR 2532 CD-ROM into your CD-ROM drive.
3. Use Windows Explorer to open the folder OCX on the CD-ROM.
4. Double-click the SETUP.EXE application to start the installation process.
5. First, preliminary files will be copied to your hard drive.



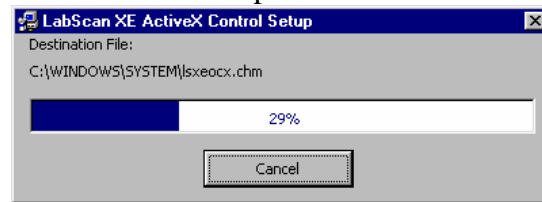
6. Next, confirm that you have closed all programs except for Windows and click **OK**.



7. Click the **Install** button to install the software to the default directory or **Change Directory** to choose another directory for the installation.

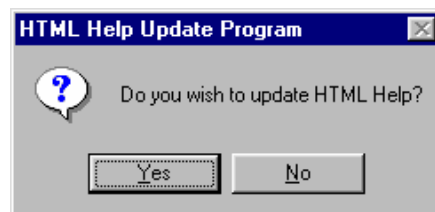


8. All needed files will be installed onto your hard drive and then a confirmation message will be shown when installation is complete.

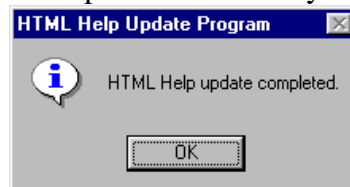


Installing the HTML Help Viewer

1. Check to see if your computer has the HTML Help Viewer already installed by double clicking on the LSXEOCX.CHM file in the DOCUMENTATION folder of the installation CD-ROM using Windows Explorer. If the Open With... dialog box is shown or you receive a message requiring a newer version of a file, then you will need to install the viewer. Continue with Step 2. If the file opens, you do not need to install the viewer.
2. Double-click on the HHUPD.EXE application in the DOCUMENTATION folder.
3. Click **Yes** to install the help viewer. All required files will then be copied to your hard drive.



4. A message indicating that the help was successfully installed is displayed. Click **OK**.



Operation

Once the ActiveX control is installed on your computer, complete the following steps to add it to your project:

1. Start Visual Basic and open a new project.
2. Select **Components** from the **Project** menu.
3. On the dialog box that appears, select the **Controls** tab.
4. Choose the component marked as "HunterLab LabScan XE." Make sure that the box to the left of the title is checked.
5. Click **OK**. A new icon will appear in the toolbox for LSXE.
6. Select **Object** from the **View** menu to ensure that your project's form is active and then double-click on the LSXE icon in the toolbox. A sensor icon will be placed on the form and you can move this icon anywhere desired on the form and/or change its name in the Properties window.

Note: This icon is not visible at run time.

7. Place any other desired controls on the form and then switch to the Code window by selecting Code from the View menu.
8. Program the control. Consult the help file as described below to read about the features the control exposes. You may also use the enclosed sample code as a starting point. Use Visual Basic to open the project file LSDEMO.VBP, located in the DEMO folder on the CD-ROM, or simply open a new project and add the form DEMO.FRM. Alternately, use Excel 97 or higher to open the workbook DEMO.XLS. The sensor should be attached to COM port 1 of the computer.

For more information, access the help file as needed from the development environment by pressing the **F1** key or by opening LSXEOCX.CHM directly from the DOCUMENTATION folder on the CD-ROM.

Note: Not all development environments support HTML-based help.