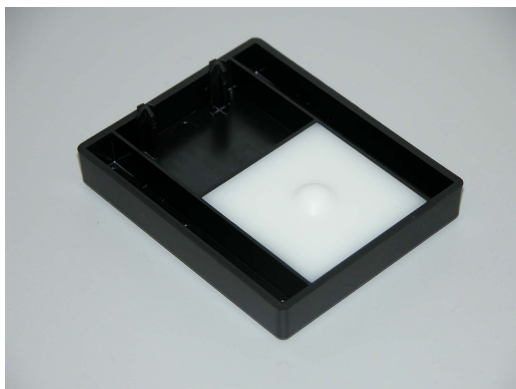


Addendum to ColorQuest XE, UltraScan XE, and UltraScan VIS User's Manuals

Description

CMR 2818 provides a holder for measuring individual contact lenses in reflectance using a ColorQuest XE, UltraScan XE, or UltraScan VIS.



Note: The small area view (SAV) option must be installed on the instrument in order to use this CMR.

Installation/Operation

Complete the following steps to measure a contact lens.

1. Install the SAV port plate and standardize the instrument in a reflectance mode for SAV.
2. Place a drop of contact lens solution on the bump in the center of the white portion of the lens holder.
3. Center the contact lens over the lens solution on the bump, making sure no air bubbles are captured beneath it.



4. Install the lens holder at the reflectance port the same way you do the white instrument tile during standardization. The pegs go in the guidance holes above the port plate.



5. Measure the sample.