



## Small Area of View Port Plate - CMR-3221

**Instrument:** Agera

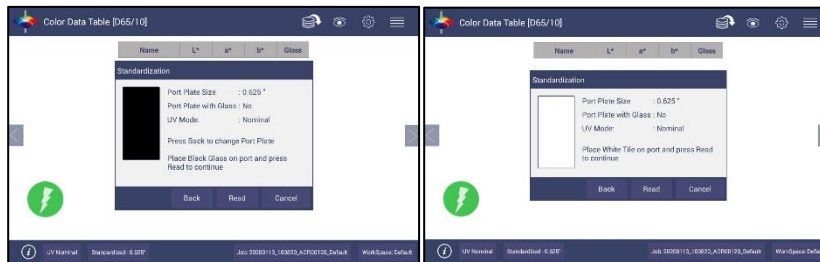
**Description:** This CMR provides a small port inserts to be used with the Agera. This port insert 7.9mm (0.3125 in) is made for the measurement of small items.

**Installation:**

1. Install the SAV Port plate from CMR-3221 in the reflectance port.



2. Press the Standardize button to initiate reading the black glass and then the white tile.  
Note: that the instrument recognizes the port as a as 0.625 in instead of 0.312 in.
3. Place the black glass at the port and then the white tile when prompted.



4. When Standardization is complete, the instrument is ready to read samples.