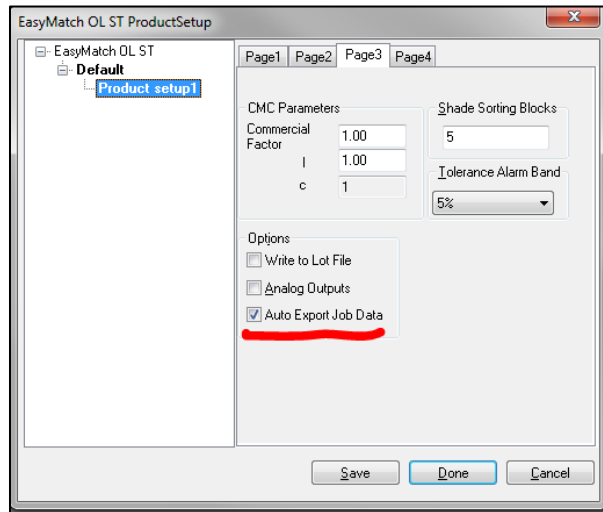


Using Auto Export

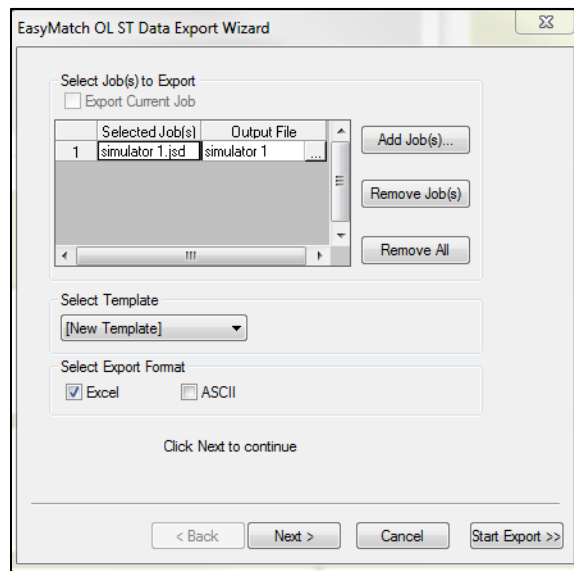
(EasyMatch ST 2.0.6 and above)

Initial Setup

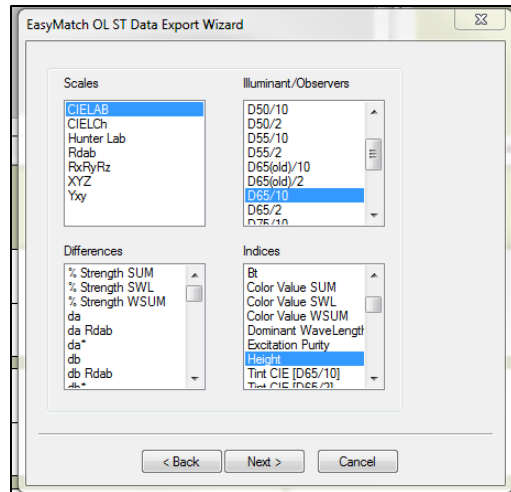
- 1) Close all existing jobs
- 2) Select **RUN > PRODUCT SETUP**. Select Page 3 and Check box for **AUTO EXPORT**. Repeat for all Setups. Then click **DONE**.



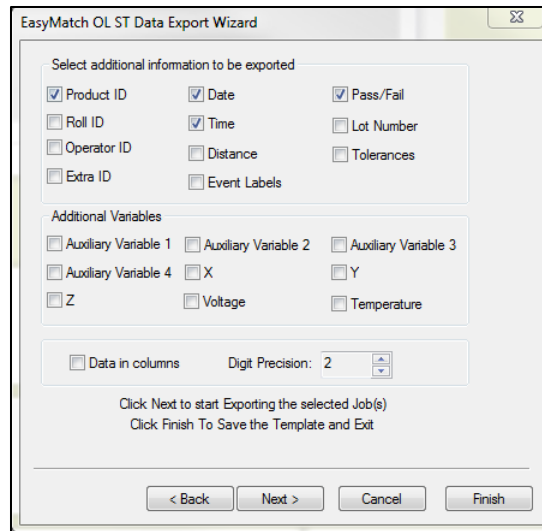
- 3) Select **FILE > EXPORT** to Open the Wizard. Click **ADD JOB(S)** button and navigate to C:\HunterLab\EasyMatch OL ST Client\EasyMatch OL ST Data Files\Job Files.
- 4) Select job to Export and click **OPEN**.



- 5) Click **NEXT** and select **PARAMETERS FOR EXPORT** then click **NEXT**.

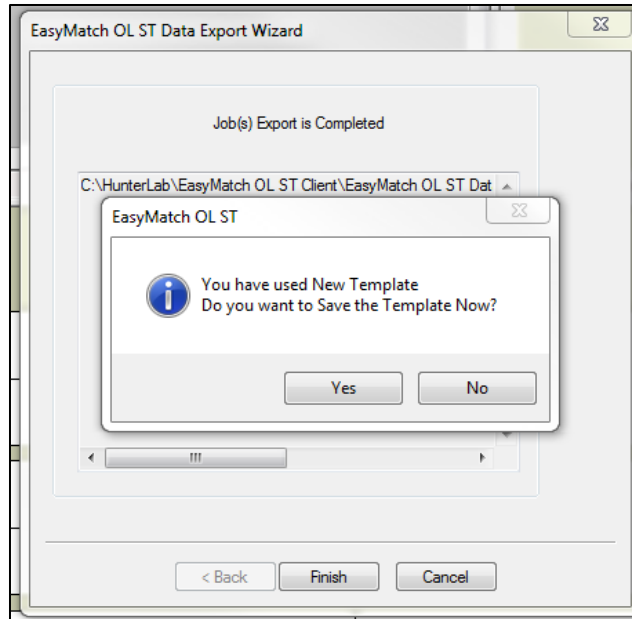


6) Select Fields to Export then click **NEXT**.



An Excel or ASCII file will be Created and Saved with Job Name in
 C:\HunterLab\EasyMatch OL ST Client\EasyMatch OL ST Data Files\Exported Files.

7) Click **YES** to Name and Save the new Template.



- 8) Navigate to folder
C:\HunterLab\EasyMatch OL ST Client\EasyMatch OL ST Data Files\Data Export Templates
And Name and Save
- 9) You may now manually Export Files using the **FILE > EXPORT** menu and selecting your new template or Automatically Exporting at the end of a job if Auto Export is selected in the Product Setup for that Job.